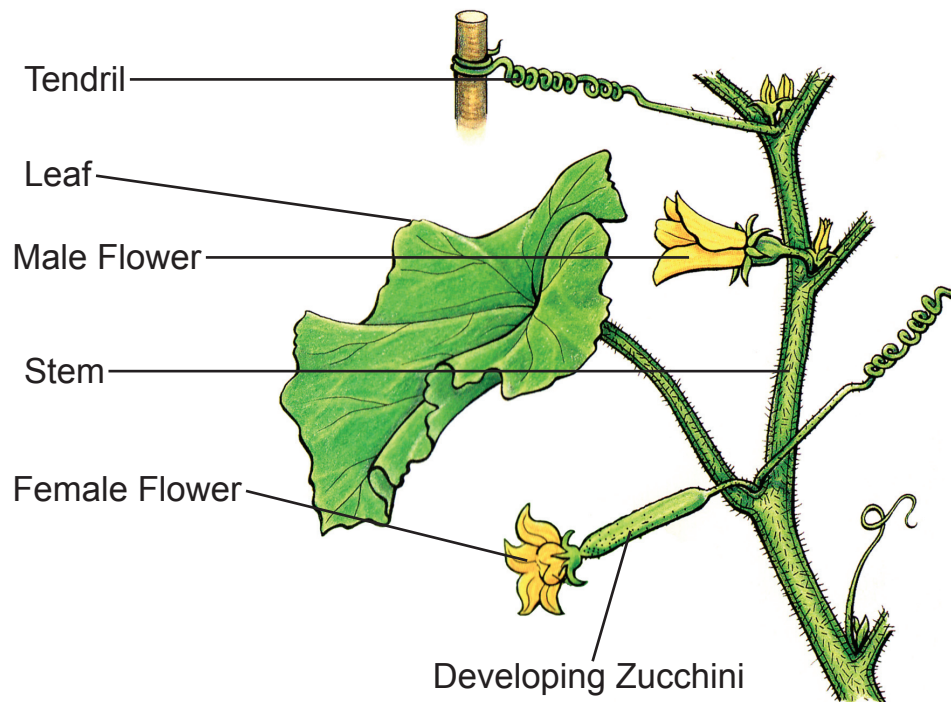




Harvest of the Month

Zucchini



Source: *Cool as a Cucumber, Hot as a Pepper*, Meredith Sayles Hughes, Lerner Books, 1999.



Harvest of the Month[®]

How Does Zucchini Grow?

Zucchini is a warm-season crop that can grow easily in temperate climates and in nearly all regions of California. It is a short-season crop compared to other Cucurbit fruits, such as melons and cucumbers. The plants can withstand temperatures up to 100 degrees and do not grow well below 60 degrees.

During the growing season, the ratio of male to female flowers on a plant is at least three to one. Only the female flowers can bear fruit and honeybees are the primary pollinators. The zucchini grows from the base of the female flower on a short stem. Once fruit is set, zucchini can grow up to one inch per day.

Optimal Temperature	65-75 degrees F
Soil	Well-drained; pH level between 5.8-7.0
Pollination	By bees
Days to harvest	60 days
Harvesting	Hand-picked, then cooled to 50 degrees F

For more information, visit:

www.ipmcenters.org/CropProfiles/docs/casquash.pdf

<http://anrcatalog.ucdavis.edu/pdf/7245.pdf>